



**Enterprise Network Center**

**1.2.218.61.00**

Release Note

Date: 05/04/2011

## 1 System Requirements

- Hardware Requirements
- Supported Operation Systems
- Supported Web Browsers

### 1.1 Hardware Requirements

- Intel P4 2.8 GHz processor or above
- 2GB RAM or above
- 10 GB free hard disk or above

### 1.2 Supported Operation Systems

- Windows XP Professional (32-bit version)
- Windows Vista (32-bit/64-bit version)
- Windows 7 (32-bit/64-bit version)
- Windows server 2008 (Only tested on R2 enterprise 64 bit and R2 standard 64 bit)

### 1.3 Supported Web Browsers

- Internet Explorer 7.0 or later
- Firefox 3.0 or later (Recommended)
- Adobe Flash Plug-in 10.0 or above is required

## 2 Version

ENC 1.2.218.60.00

## 3 Features

### 3.1 What's New (vs. ENC 1.1)

#### ➤ Support NWA1300-NJ

- Support NWA1300-NJ Auto-discovery, batch importing, trap registration, profile provision and AP monitoring.
- Append a new device type "NWA1300-N Series"

#### ➤ Provide ENC console

Provide ENC console for administrator to monitor and maintain ENC, especially provide trouble shooting message during ENC system starting period.

#### ➤ Provide "Folder" on OTV

Provide "Folder" on OTV for administrator to re-arrange the devices in a user-defined category

#### ➤ Event enhancements

- Support automatically acknowledged the correlated events

- Support deactivate unnecessary events
- **Inventory enhancements**
  - Support customization columns for display
  - Append “MAC Table” and “Wireless” tab pages as device properties.
- **Provide IP address information for user login log**
- **Performance Monitoring enhancements**
  - Append new options for monitoring threshold check: equal/not equal/status change
  - Provide device’s display name in the title of the report
- **Append a new column “Event Index” in the Event/Alarm table**

### 3.2 Bug fixed in ENC1.2

- [Configuration > MIB Browser]  
When opening or editing MIB browser (also Custom Table and Table View and Graph View) many times, it will fail.  
SPR: 110211395
- [Configuration > MIB Browser > Graph View]  
The number of selected graph view items is beyond the Max. allowed number(30) in MIB Browser.  
SPR: 110214589
- [Report>Reports]  
In “Events Summary-> view report” page, there isn’t hyperlink here.  
SPR: 110216868
- [Report>Reports]  
Report should be able to be modified in customized reports.  
SPR: 110216870
- [Report>Reports]  
Not support “enter” key in detail report  
SPR: 110216871
- [Configuration > MIB Browser]  
Select a read-only node, “set” button does not gray out.  
SPR: 110218174
- [Tool > Auto-Discovery]  
Start “Auto discovery”, then click “Stop” button, “Stop” button can’t be changed to “Discover” button again.  
SRP: 110222396

## 4 Notes

1. Devices supported:

Device Type	Build-in Models	Supported Key Features
-------------	-----------------	------------------------

Switch	XGS-4728F XGS-4528F XGS-4526 GS-4024 GS-2200-24 GS-4012F ES-3124PWR ES-2024A ES-2024PWR ES-3124 ES-3148 ES-4124 ES-2108 ES-2108-G ES-2108PWR	Auto-discovery MIB-Browser Firmware Upgrade Update/Backup Script Distribution Performance Monitoring RMON VLAN MGMT (only build-in Models) Port MGMT (only build-in Models)
Wireless AP	NWA-1100, NWA-3160, NWA-3163, NWA-3166, NWA-3500, NWA-3550, NWA-3100, NWA-3165	Auto-discovery MIB-Browser Firmware Upgrade Update/Backup Script Distribution Performance Monitoring
NWA-1300-N Series	NWA-1300-NJ	Auto-discovery MIB-Browser Firmware Upgrade Update/Backup Performance Monitoring AP manager

SNMP versions supported: v1, v2c and v3

The port number used in ENC

Port	Protocol	Usage
80	TCP	Web server
162	UDP	SNMP trap
443	TCP	Web server
514	UDP	Syslog
5432	TCP	PostgreSQL

ENC uses PostgreSQL 8.4.1 as its database, and a service named "ENC\_pgsql" will be created in windows services after ENC installed. If PostgreSQL has already existed in your computer, it will be stopped.

Support maximum device number: 2000 device.


## 5 Known Issues

- Not support SNMPv3 trap.
- Not support PoE configuration in Port Management
- Not support data auto-sync between OTV and device group
- Not support CPU utilization for ZyNOS ZyWALL.
- Not support firmware version auto-discovery for ZyWALL USG series
- Not accurate for the data of interface utilization in device property page
- Not support data synchronize with devices before apply the configurations from ENC to the switches for port management and VLAN management applications.
- If there is problem with IE operation, please add "about:blank" to trusted sites.

## 6 History

### ENC 1.1

#### 6.1 What's New (vs. ENC 1.0)

- Add new settings with Log /Event serverity in "Message Center". User can get more system message.
- Display devices port setting for each VID by paging in "VLAN Management" .
- **ENHANCEMENT in RMON**
  - Remove Active/Inactive buttons from GUI. RMON will not support Active/Inactive again.
  - Display data by new chart component for Line, Bar and Pie chart.
- Display data by new chart component for Line, Bar and Pie chart in "MIB Browser".
- Display all devices by table view according to type in "Device View" or group "Group View".
- **ENHANCEMENT in Script Distribution**
  - User can send scripts by SSH.
  - User can send multi-commands based on keywords.
- **ENHANCEMENT in OTV**
  - Add new status (un-monitor) when status polling is disabled in device inventory.
  - Display total number of devices for each subnet.
- **ENHANCEMENT in MAP View**
  - Background setting for each subnet.
  - Add CPU and Memory property for each device.
  - Add TX/RX information for each physical link of device.
- **FEATURE CHANGE in Performance Monitor**
  - Performance Monitor can keep instances setting.
  - Add new icon  to display monitor data.
  - Performance Library can be reused in each device.
  - Add new tab "Schedule report" to help user create performance monitor report for each device.
  - The max days of data stored is 30 days.
- **FEATURE CHANGE in Report**
  - Replace "Performance" type with "Top N Report" which based on Performance Library.
  - Add many build-in reports to help users to see them directly without creation.

#### 6.2 Bug fixed in ENC1.1

- [GUI] In OTV menu, right-click one device, select "delete", "delete window" pops up, mouse move this window, the button "yes" and "no" of this window will always be showed.  
SPR: 100618998

- [Inventory] Change the device form USG100 to GS-2200-24, will cause the information incorrect.  
SPR: 100629555
- [Syslog] System can receive some syslogs although the device has been removed.  
SPR: 100630611

## Appendix A

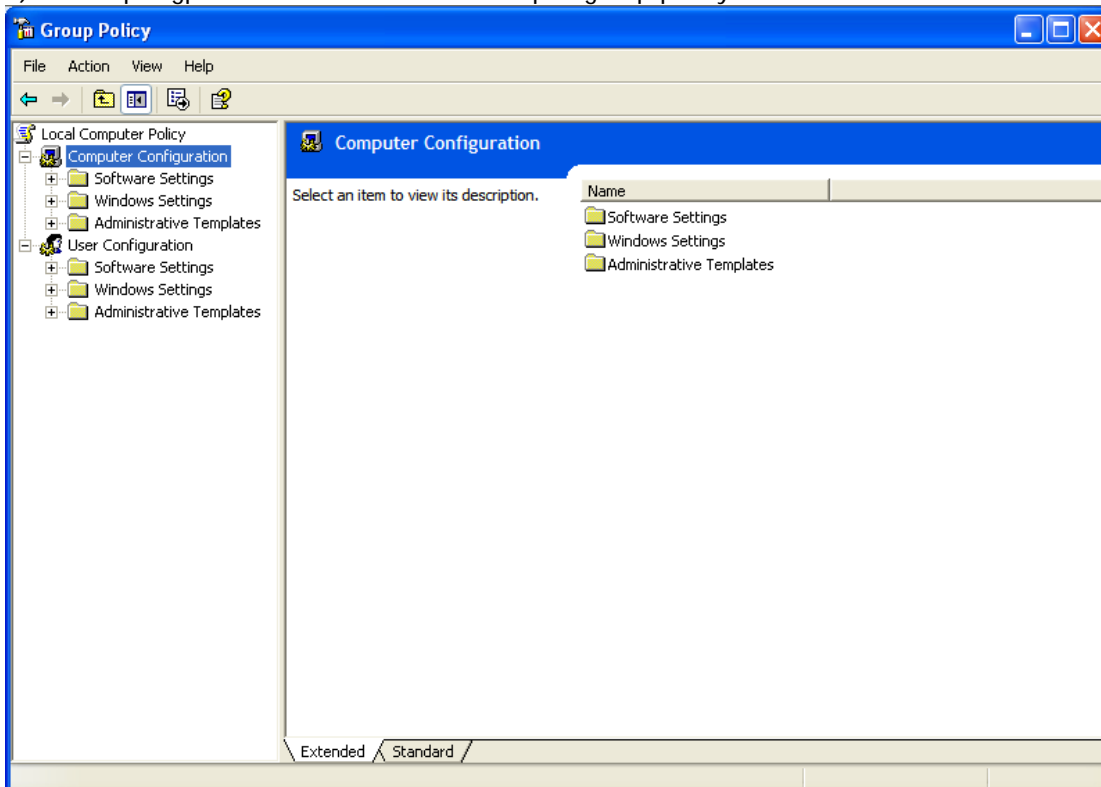
### Notes during installation process

1. Password of account "postgres":

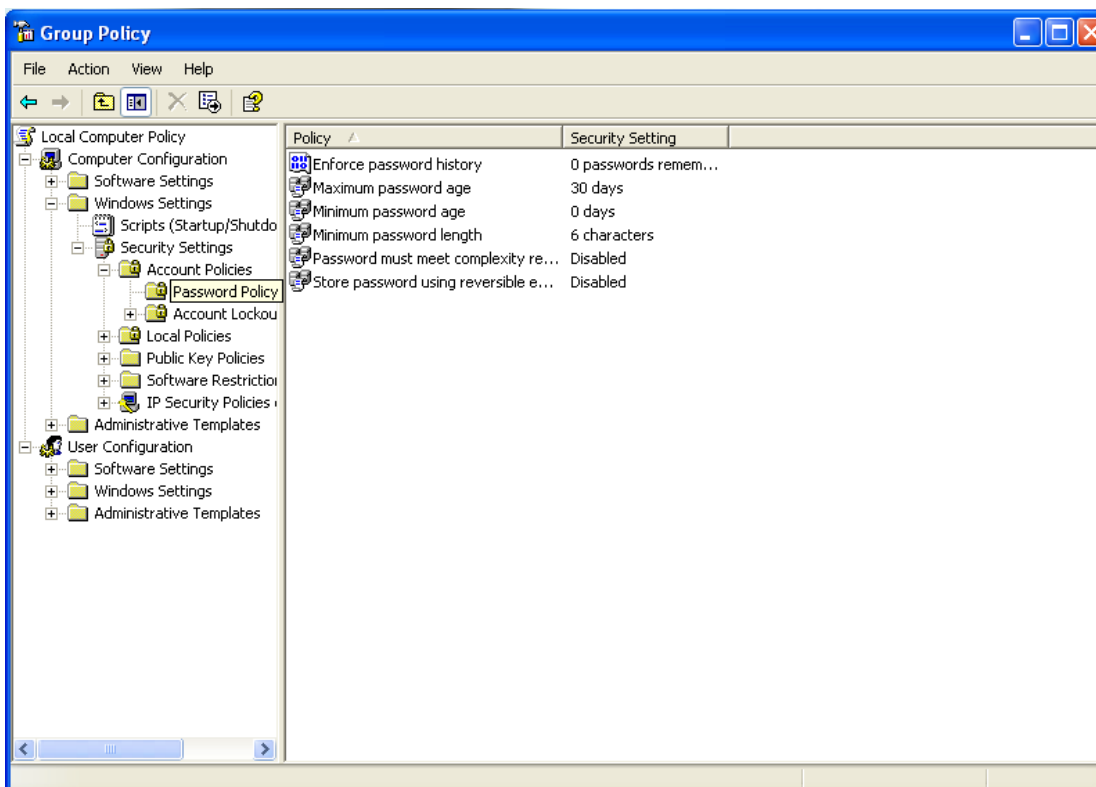
After you installed the ENC, you will have a windows account "postgres". And this password was saved in %ENC\_install\_path%\pgsql\pgsql.properties.

This password meets with most OS requirement, but if your OS reject this password, you can follow steps as below to change your windows settings.

1) Input gpedit.msc in start -> run to open group policy window.



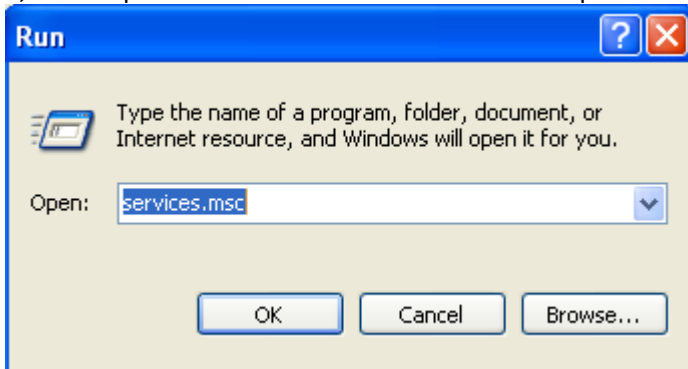
2) Open Windows settings -> security settings -> account policy -> password policy to get your password constraints



Then you can change the reference item to let it meet with the password of "postgres".

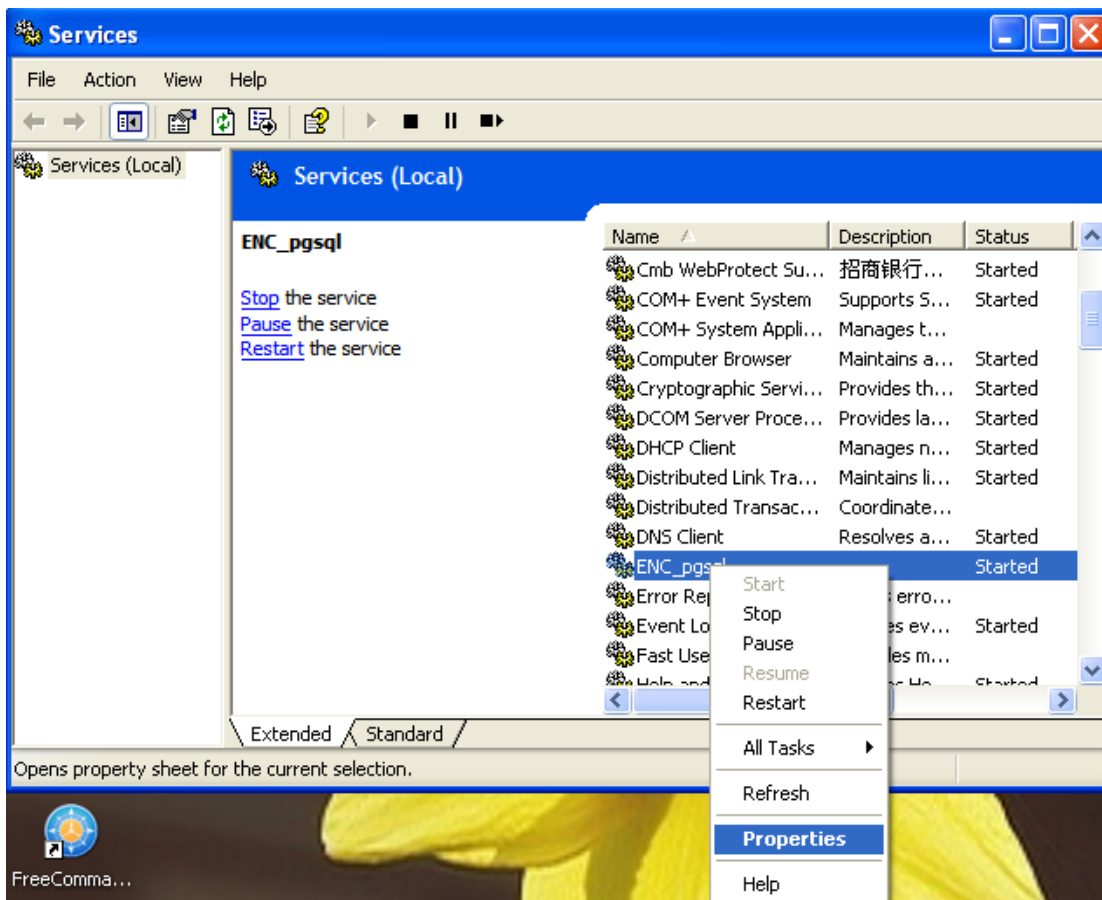
2. If your "Maximum password age" has expired, please follow below steps to set:

1) Input "services.msc" in start -> run to open service panel

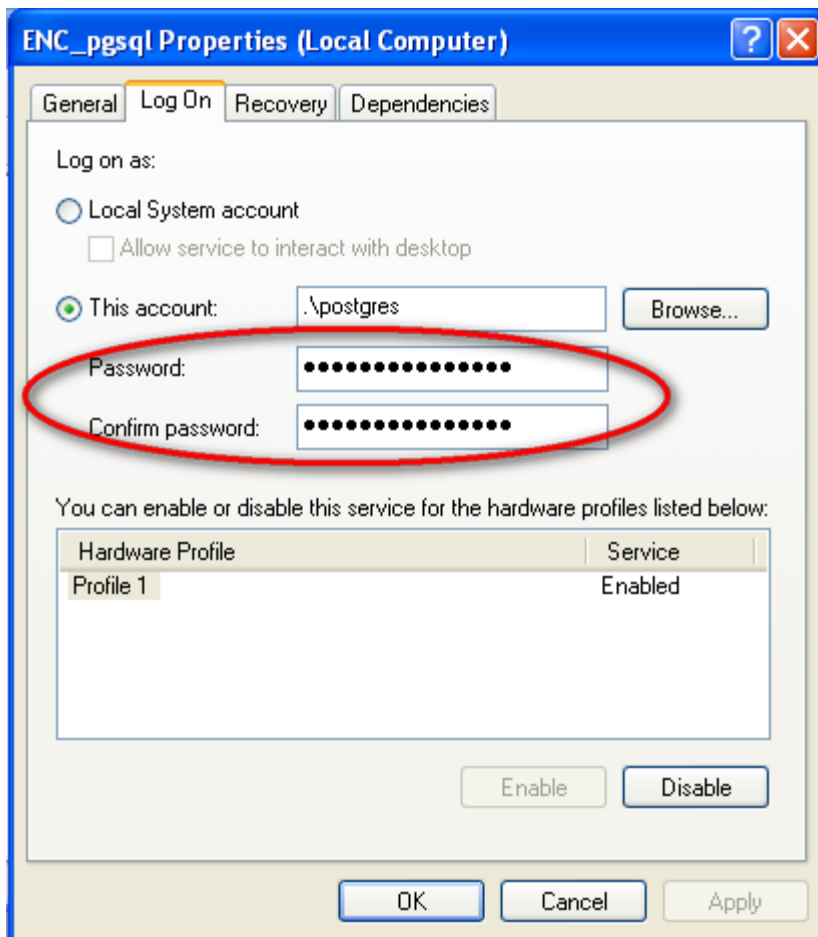


2) Right click service "ENC\_pgsq!" and choose "Properties"





- 3) Choose "Log On" label
- 4) Retype your password of account "postgres" and click "OK"



5) Restart ENC.